

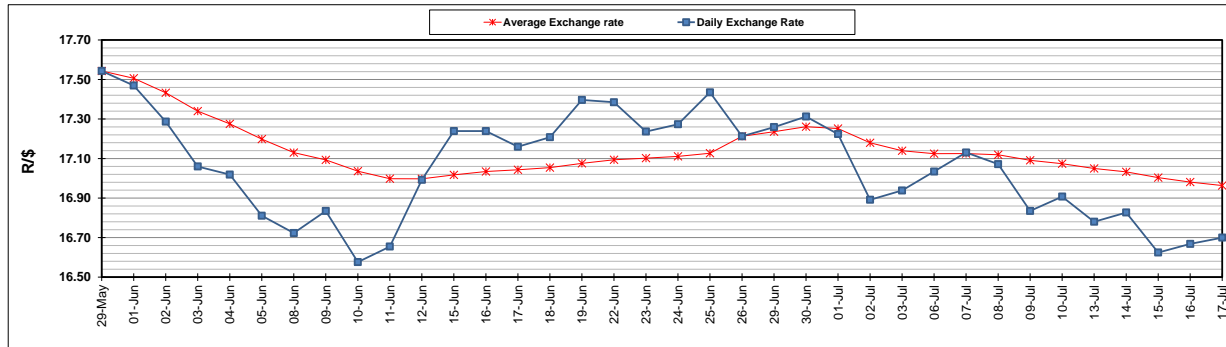
	PETROL 95 ULP	PETROL 93 ULP & LRP	DIESEL 0.05%	DIESEL 0.005%	ILL. PAR.
GAUTENG PUMP PRICE (SA c/l) AS FROM 01/07/2020	1,512.000	1,483.000	-	-	-
WHOLESALE PRICE (SA c/l) AS FROM 01/07/2020	-	-	1,303.560	1,307.960	703.828
SINGLE NATIONAL MAXIMUM RETAIL PRICE	-	-	-	-	882.000
BASIC FUEL PRICE - 17/07/2020 (SA c/l)	539.266	528.525	572.820	577.617	513.076
PRESS RELEASE CONTRIBUTION TO BFP 01/07/2020 - 17/07/2020 (SA c/l)	564.770	545.770	552.630	557.030	499.128
UNIT OVER/(UNDER) RECOVERY - 17/07/2020 (SA c/l)	25.504	17.245	(20.190)	(20.587)	(13.948)
AVERAGE BASIC FUEL PRICE 26/06/2020 - 17/07/2020	556.066	541.415	579.600	584.024	512.936
AVERAGE UNIT OVER/(UNDER) RECOVERY 26/06/2020 - 17/07/2020	(23.546)	(26.208)	(59.408)	(58.682)	(53.933)

ANALYSIS MOVEMENT OF AVERAGE OVER/(UNDER) RECOVERY

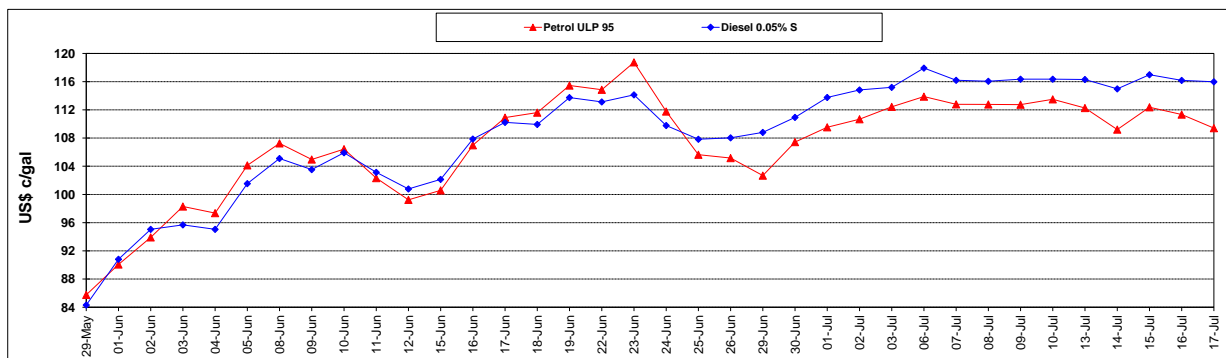
	PETROL 95	PETROL 93	DIESEL 0.05%	DIESEL 0.005%	ILL. PAR.
- MOVEMENT IN INTERNATIONAL PRODUCT PRICES	(28.912)	(31.432)	(65.000)	(64.317)	(58.883)
- MOVEMENT IN EXCHANGE RATE	5.366	5.225	5.593	5.636	4.950
AVERAGE UNIT OVER/(UNDER) RECOVERY 26/06/2020 - 17/07/2020	(23.546)	(26.208)	(59.408)	(58.682)	(53.933)

R/\$ EXCHANGE RATE - (R/\$16.6998 - 17/07/2020)

EXCHANGE RATE USED IN BASIC FUEL PRICE



INTERNATIONAL PRODUCT PRICES OF BASKET USED IN BASIC FUEL PRICE



BASIC FUEL PRICE IN SA CENTS PER LITRE

